



26 Ferriman Road
Huntingdon, PE28 0TQ



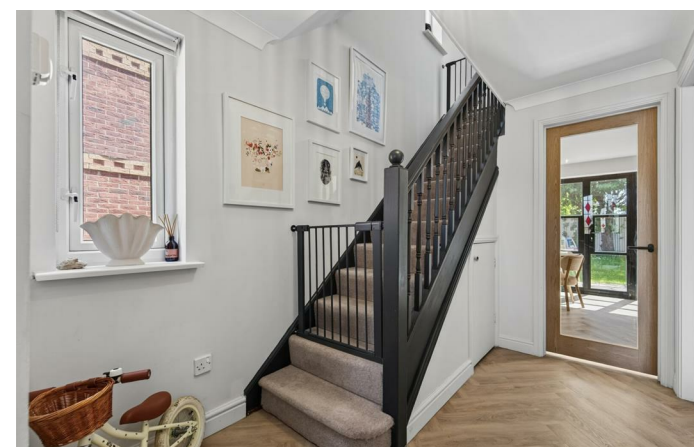
Christie Taylor
Partnered With
Simpsons
Property Experts

This three-bedroom detached home is presented to the market in immaculate condition throughout and has been thoughtfully and generously improved by the current owners. The accommodation opens with a welcoming entrance hall with guest WC, leading to a front-facing lounge and a beautifully refitted kitchen/dining room featuring Quartz worksurfaces and contemporary cabinetry. A versatile playroom/formal dining space and a separate utility room complete the ground floor.

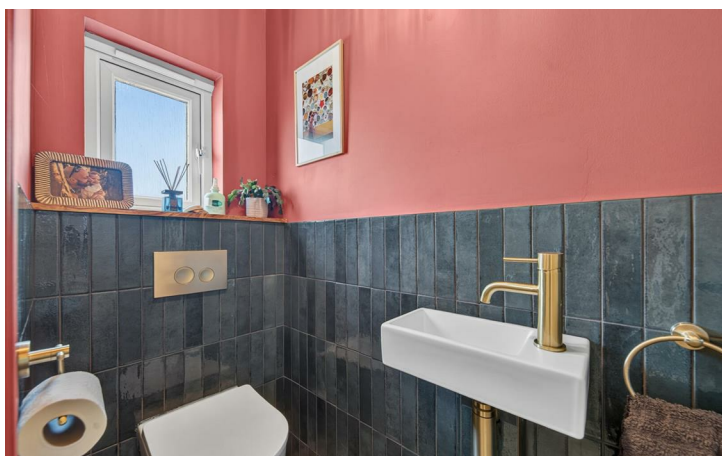
Upstairs, there is a modern bathroom and three well-proportioned bedrooms, all of which benefit from fitted wardrobe storage. The main bedroom further enjoys the convenience of an en suite shower room.

Outside, the property offers an open aspect and driveway parking to the front, while the fully enclosed rear garden provides a high degree of privacy—an ideal space for relaxation and outdoor entertaining.

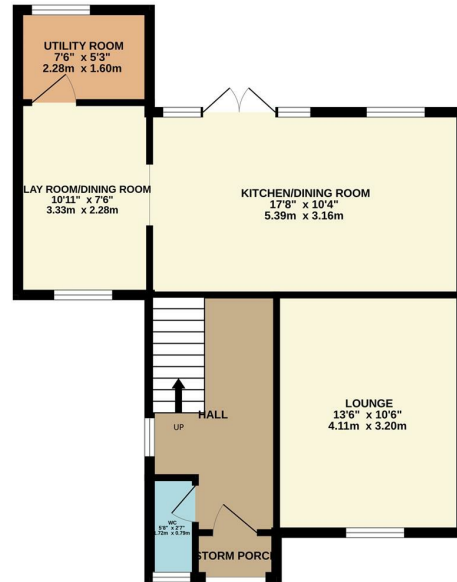
A standout home in a sought-after village location. Viewing is highly recommended.



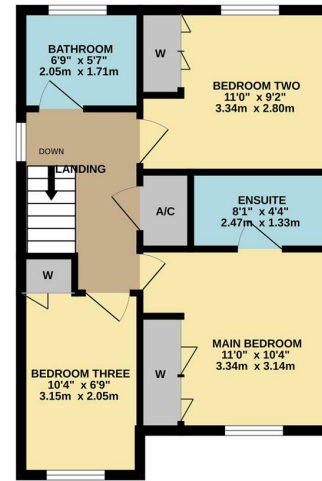
£375,000



GROUND FLOOR
561 sq.ft. (52.1 sq.m.) approx.

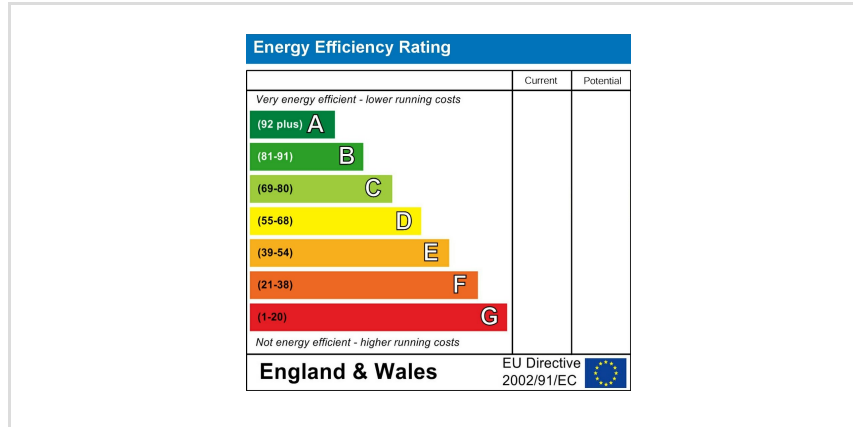


1ST FLOOR
439 sq.ft. (40.8 sq.m.) approx.



TOTAL FLOOR AREA - 1001 sq.ft. (93.0 sq.m.) approx.

Whilst every attempt has been made to ensure the accuracy of the floor plan contained herein, measurements of doors, windows, rooms and any other items are approximate and no responsibility is taken for any error, omission, or mis-statement. The plan is copyright to Simpson and Partners and is for illustrative purposes and should only be used as such by any prospective purchaser. The services, systems and appliances shown have not been tested and no guarantee as to their operability can be given.
Made with Metropac C0208





Christie Taylor
Partnered With

Simpsons
Property Experts

Tel: 01480 589584

Email: kimbolton@simpsonspropertyexperts.co.uk

Web: simpsonspropertyexperts.co.uk/our-locations/kimbolton

